

H2O

care home

AWS City Water Monitor

Remove Chlorine, harmful toxins and transform your city water into refreshing, clean water for your entire house with one simple solution: **AWS City Water Monitor!**



Monitor control can let you know when it's time to change the filter.

- 💧 Dual tank filtration.
- 💧 Reduction of unwanted bad tasting water.
- 💧 Reduction of Chlorine helps to avoid dry skin and hair
- 💧 Longer lasting cartridges with finer particle retention, high flow rates and lower pressure drop than traditional smaller whole house filters.
- 💧 Bigger is better!



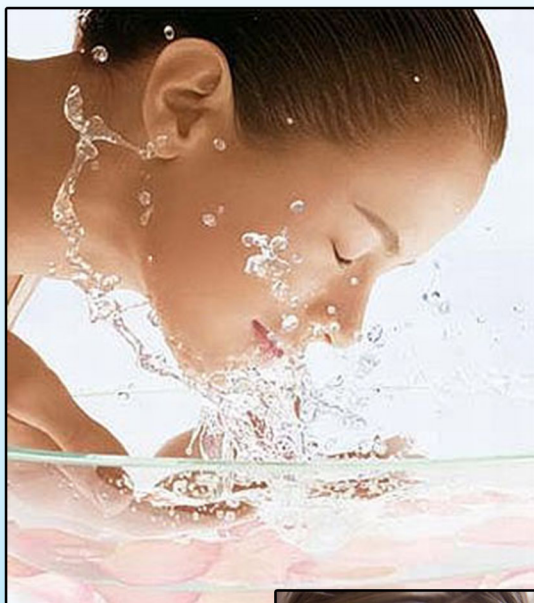
The AWS City Water Monitor simply out performs other filtration solutions

Better Filtration - Extended Service Life - There's No Competition!

12-24 months versus 1-3 months with 3x media content and 2x surface area to less efficient options! The total surface area of the dual gradient City Water Monitor Pre Filter is approximately 100ft², as compared to a typical single layer 2½"x20 filter, is approximately 7ft² of filter media area, and a 4½"x20 is approximately 16ft². We have nearly 6.5x open area compared to standard 4.5x20 filters... 100ft² vs. 16ft² and nearly 14.5x open area compared to standard 2.5x20 filters... 100ft² vs. 7ft². Extended service life!

Excellent Contaminant Reductions

The standard City Water Monitor Carbon Block filter is rated to treat >150,000 gallons (567,812 Liters) of water @ 7 gpm (26.50 LPM) with greater than 90% reduction, estimated capacity using 2ppm of free chlorine.



Facts about Chlorine:

- 1) Over 98% of all drinking water supplies in the United States are treated with Chlorine to prevent bacterial infection from tap water.
- 2) Chlorine will dry out skin, hair and can be a continual source of breathing irritation for people with bronchitis or other lung health issues.
- 3) Chlorinated water is toxic to human intestinal bacteria, the body's natural flora that converts organic compounds in our food into necessary nutrients.
- 4) The EPA allows a higher level of Chlorine in tap water (4 parts per million/ppm) than the recommended Chlorine levels for public swimming pools (1-3 ppm).
- 5) The presence of Chlorine in tap water has been linked to the dramatic rise in heart disease in the United States. Scientists argue that Chlorine is a primary cause of the development of atherosclerosis (hardening of the arteries).

(800) 539-1100

www.h2ocare.com

1) "Facts about Chlorine," Centers for disease control and prevention. Centers for disease control, 10 Apr 2013. Web. 8 Jul 2013.
Read more: <http://www.lifeionizers.com/blog/news-updates/facts-chlorine-drinking-water/#ixzz2kdd71amL>.

2) Kahuna Kupua A'o, Lono. 2004. Don't Drink the Water. Twin Lakes, WI: Lotus Press.

3) "Pool Water Chemistry," Pool and Spa. Accessed: June 7, 2010.